

 2  1  1



Athlone Square, *Windsor*

OSBORNE HEATH

A fully refurbished two bedroom apartment in Windsor town centre with a south facing balcony, garage and parking.

This two bedroom apartment has been fully refurbished including underfloor heating throughout.

There is a modern kitchen with space for a dining table, large living room with doors out to the south facing balcony, a bathroom and two good size bedrooms. There are views of Windsor castle over rooftops from the main bedroom.

Outside there is a garage with parking in-front of it and access to a shared drying balcony.

Athlone Square is part of the Ward Royal development, originally opened by the late Queen Elizabeth II in 1969. Ward Royal is in Windsor town centre and residents have their own private entrance to Windsor Yards shopping centre. As well as shopping facilities Windsor also has the Castle, Great Park, Racecourse and Legoland. Nearby train stations include Windsor & Eton Central and Windsor & Eton Riverside where trains run to London Paddington (via Slough) and London Waterloo. Windsor is also convenient for the M4, M25, M40, M3 and Heathrow Airport.

EPC rating E. Council Tax band C. Leasehold with 169 year remaining. Service Charge and Ground Rent £1,935 pa.

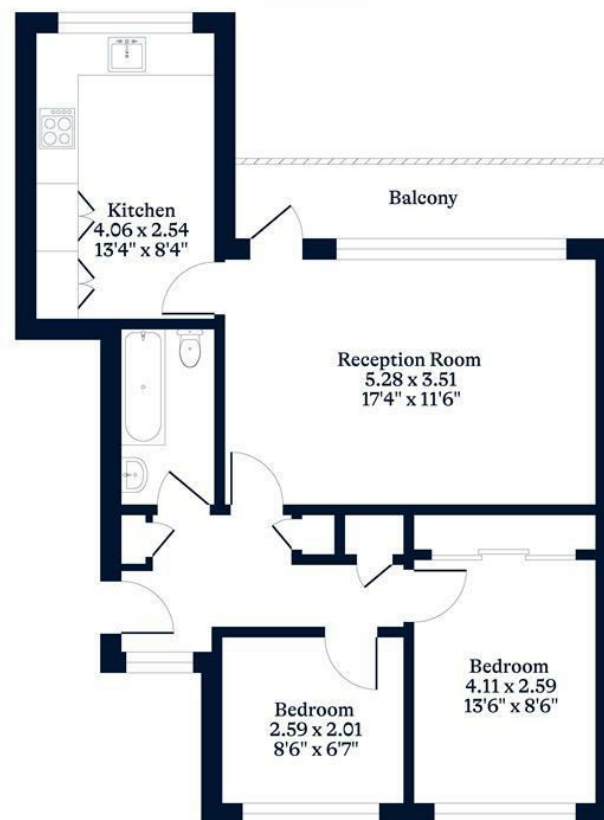




APPROXIMATE FLOOR AREA
Apartment - 58.60 sq m - 631 sq ft
(Gross Internal Area)



NOT TO SCALE
This plan is for illustration purposes only



Second Floor

OSBORNEHEATH.CO.UK

This floor plan has been created by Property Shoot Ltd following the RICS code of measuring and is for indicative guidance only. Whilst every attempt has been made to ensure the accuracy of the floor plan contained here, measurements of doors, windows and rooms are approximate and no responsibility is taken for any error, omission or misstatement. Details shown on this floorplan, including all measurements, areas and proportions cannot be guaranteed by either the provider or estate agency and should not be relied upon.

©PROPERTYSHOOT